

F BLOCK S3 | EVENTS SPACE

# F BLOCK S3

THE  
TRUMAN  
BREWERY

## F BLOCK S3 | EVENTS SPACE



EVENTS



FASHION  
SHOWS



EXHIBITIONS



TRADE  
SHOWS



FILMING &  
PHOTOGRAPHY



LICENSED

## ABOUT

F Block S3 is over 8,000 sqft of raw event space. This long rectangular space is flooded with natural light via skylights and industrial style windows. The space is characterised with industrial piping, ceramic wall tiles, and an unpolished concrete floor. Hired on its own, the space is best used as a location for filming and photography. When hired as part of the whole Second Floor of F Block, the combined space is excellent for fashion shows and is well suited for exhibitions, networking events, and smaller trade shows.

## LOCATION

Located on the second floor of Truman Brewery's Events Building, F Block.

## ADDRESS

Brick Lane, London, E1 6QL

## CAPACITY

320 for the entire second floor of the building at any one time.

## SIZE

8,968 sqft

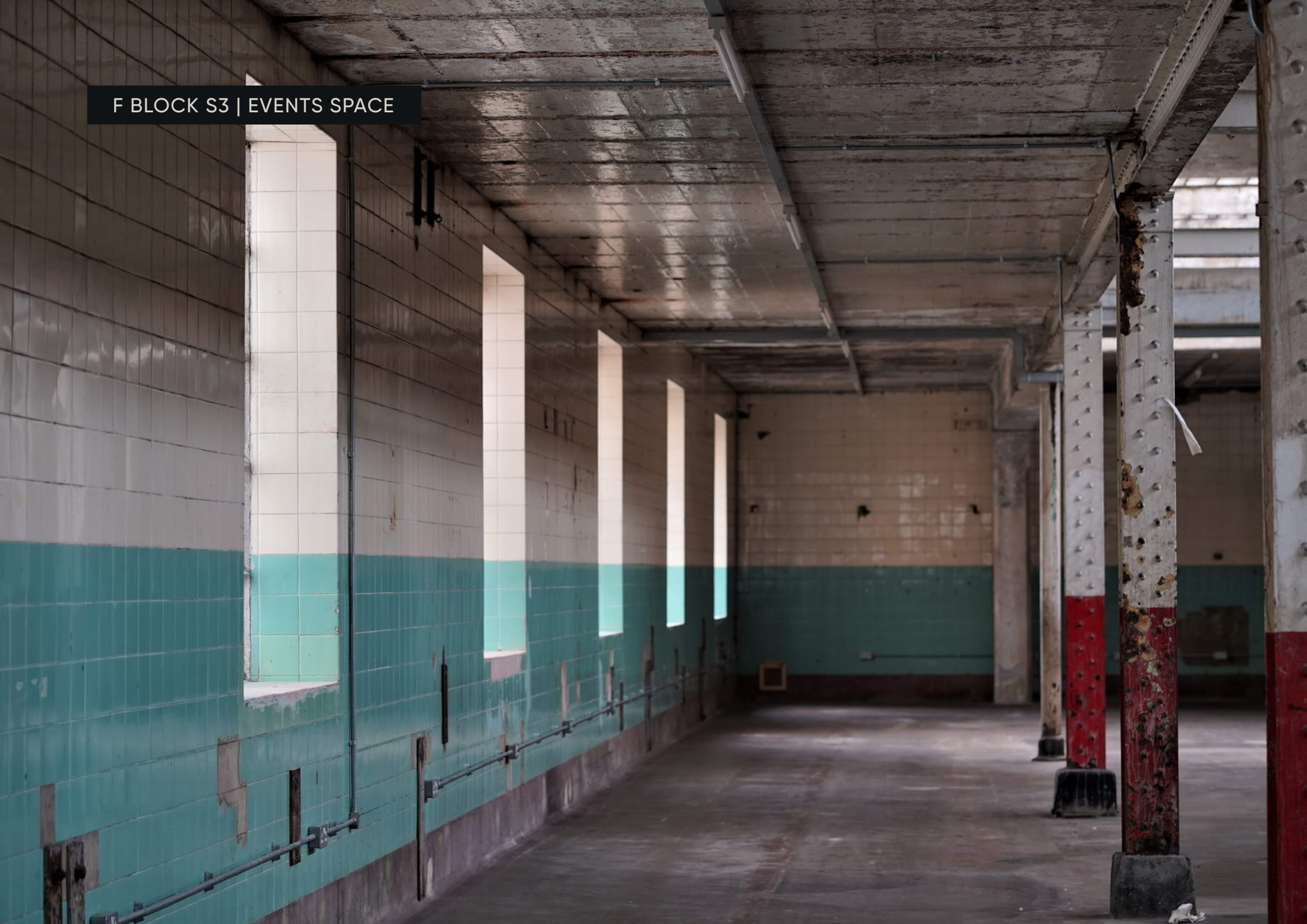
## LEVEL

Second floor

## CEILING HEIGHT

3.5m

F BLOCK S3 | EVENTS SPACE



## ACCESS

Guest Access is subject to availability via adjacent rooms.  
Direct lift access is available via Ely's Yard.

## SERVICES

The space does not benefit from dedicated toilets or any other services.

## COMMS

The Truman Brewery's dedicated on-site service provider, TruTec Services, can easily provide support, networking, telephony and internet connectivity to this location.

## POWER

1 x 125A 3 Phase C Form Socket.  
1 x 63A 3 Phase C Form Socket.  
Twin 13A Sockets throughout.

## LIGHTING

Strip Lights.

## SUPPLIERS

We recommend the use of the following teams:

EVENT PRODUCTION:

**E1 PRODUCTIONS**

INTERNET CONNECTIVITY:

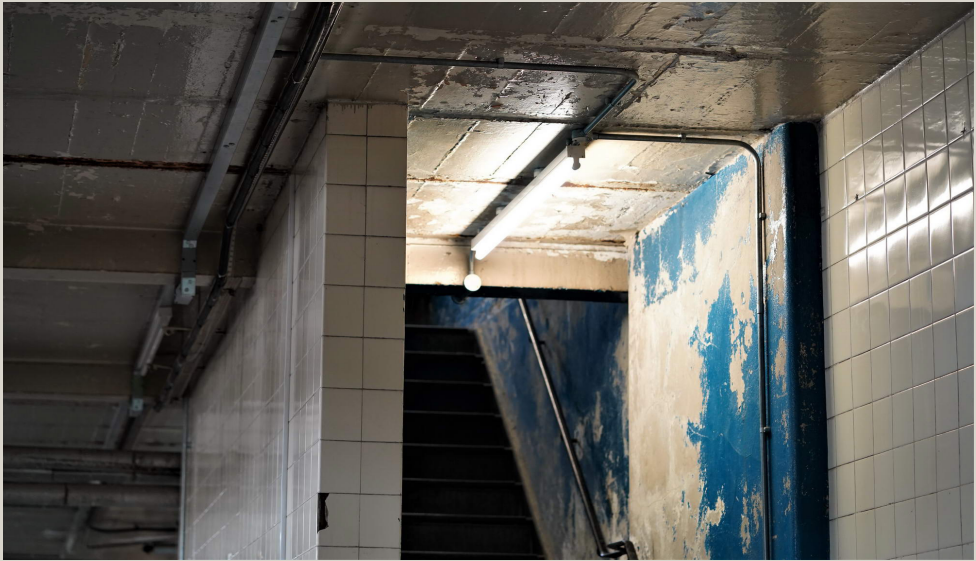
**TRUTEC SERVICES**

SECURITY:

**Trusec Security Ltd.**  
Event Security Services

EVENT CLEANING SERVICES:

**The Truman Brewery**  
Event Cleaning Services





# THE TRUMAN BREWERY

A: 91 Brick Lane, London E1 6QL  
 T: 0207 770 6011  
 E: monika@trumanbrewery.com

DRAWING NAME

F.02.S3

SPACE DETAILS

F BLOCK  
 2ND FLOOR - S3  
 BASIC PLAN

VENUE LOCATION

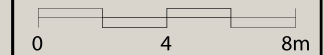
F Block  
 15 Hanbury Street  
 London E1

LEASE AREA (WITHIN RED BOUNDARY)

8502 sqft

SCALE

1:240 @ A4



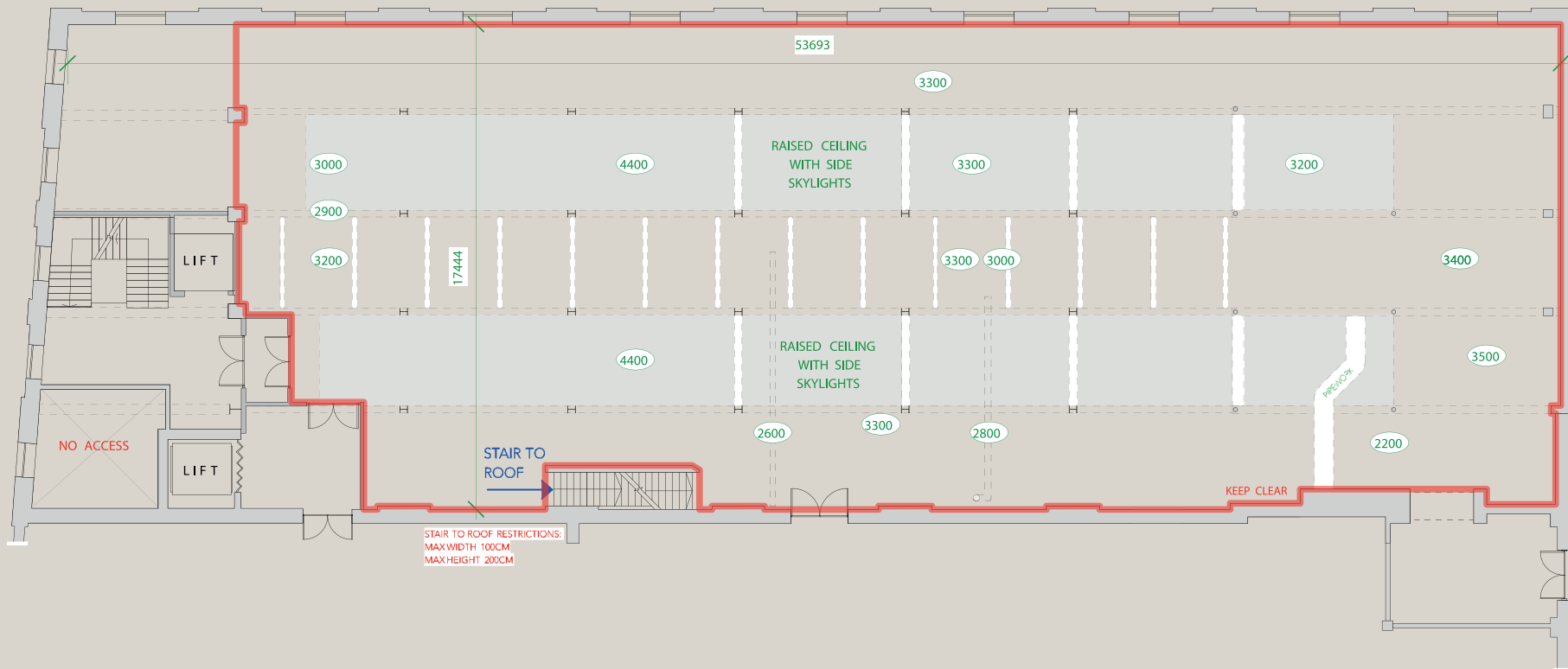
NOTES

--- SIGNIFIES CEILING STRUCTURES, MOSTLY BEAMS

1234 CEILING HEIGHTS GIVEN IN MILLIMETRES ROUNDED DOWN

All measurements are approximate.  
 Measurements in millimetres.

DO NOT SCALE.  
 IF IN DOUBT ASK.



STAIR TO ROOF RESTRICTIONS:  
 MAX WIDTH 100CM  
 MAX HEIGHT 200CM



Location

100

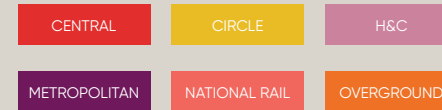


## TRANSPORT

F Block and The Truman Brewery have probably the most central Shoreditch location, and are easily reached by bus, rail, tube or on foot.

The venue benefits from close access to all forms of public transport. Liverpool Street and Shoreditch High Street stations are a short distance away, with Aldgate East within easy reach, offering fast connections across London and beyond.

**Liverpool Street Station**  
Walking distance: 10 min



**Shoreditch High Street Station**  
Walking distance: 5 min



**Aldgate East Station**  
Walking distance: 10 min



**Whitechapel Station**  
Walking distance: 15 min



## Contact us to arrange a viewing:

### Phone

+44(0)20 7770 6001

### Email

events@trumanbrewery.com

### Drop in

The Truman Brewery Events Department,  
E y's Yard,  
15 Hanbury Street,  
London E1 6QR